

# **DAILY ROUTINES**

**Bass Trombone Edition**

**David Vining**

**Preface by George Curran**

Daily Routines for Bass Trombone  
David Vining  
MPM 14-010  
\$24.95

© 2010 Mountain Peak Music

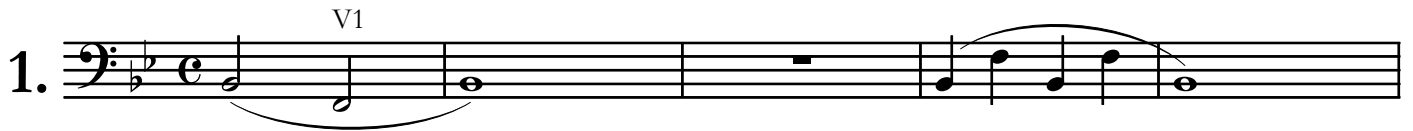
2700 Woodlands Village Blvd. #300-124  
Flagstaff, Arizona 86001  
[www.mountainpeakmusic.com](http://www.mountainpeakmusic.com)

This publication is protected by Copyright Law.  
Do not photocopy. All rights reserved.

ISBN 978-1-935510-30-7

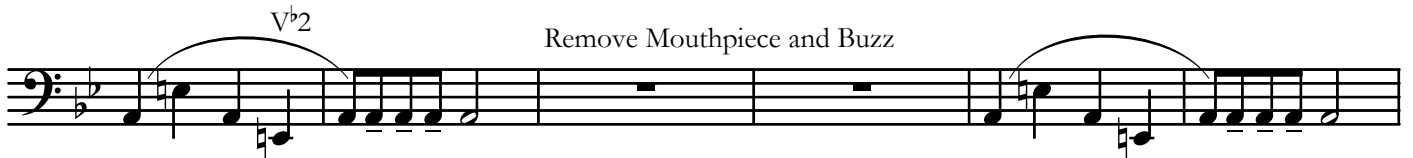
# I. Basic Routine

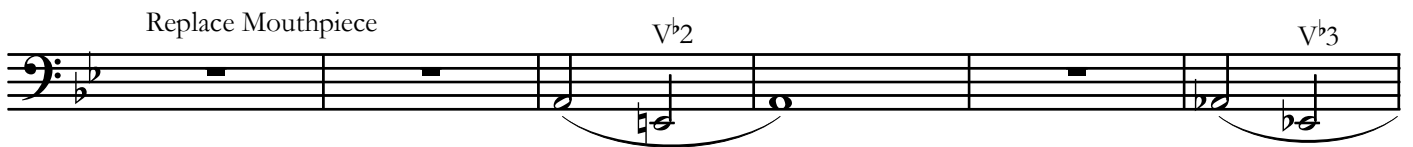
♩ = 80

1. 

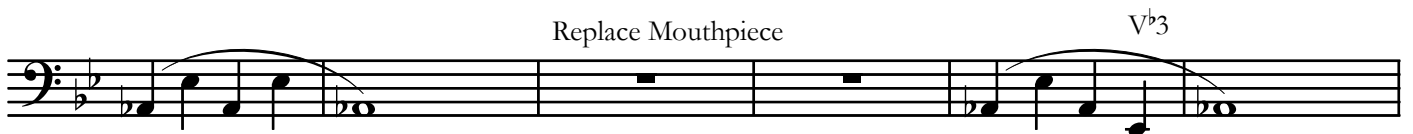


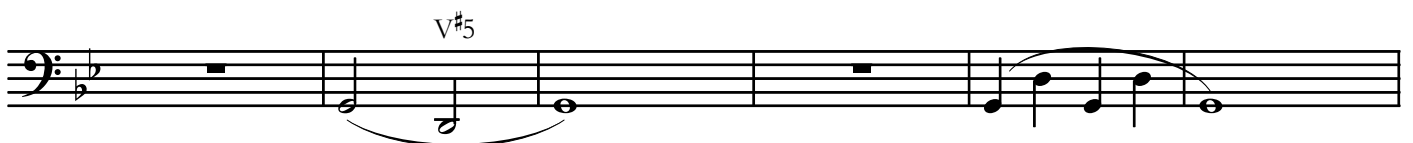












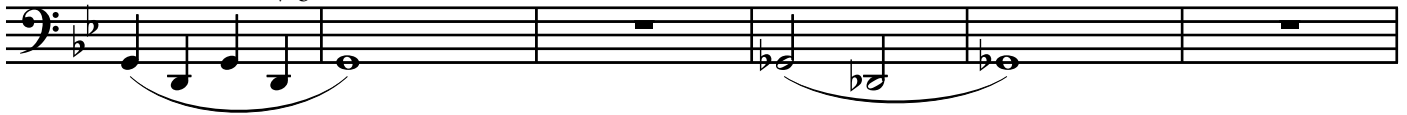
Remove Mouthpiece and Buzz

Replace Mouthpiece



V#5 V#5

V6



6

Remove Mouthpiece and Buzz



Replace Mouthpiece

V6

Vb7



Remove Mouthpiece and Buzz

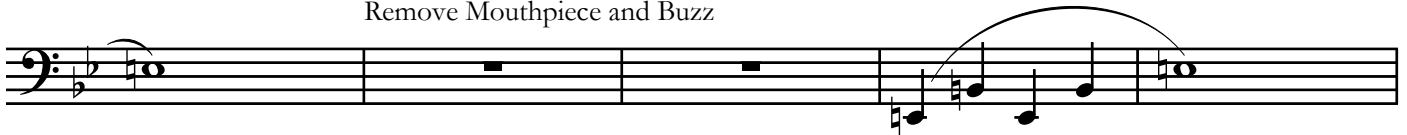


Replace Mouthpiece

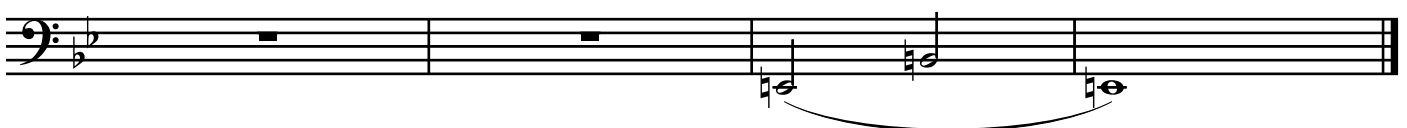
Vb7



Remove Mouthpiece and Buzz



Replace Mouthpiece



♩ = 92

2.

*p* *f* *p*      *p* *f* *p*

*p* *f* *p*      *p* *f* *p*

*p* *f* *p*      *p* *f* *p*

*p* *f* *p*      *p* *f* *p*

♩ = 72 +

3A.

Continue pattern in each position

2      7      6

Continue pattern in each position

2      3      3      3      3      3      3      3

3      3      3      3      3      3      3      3

3      3      3      3      3      3      3      3

3      3      3      3      3      3      3      3

Continue pattern in each position

Continue pattern in each position

♩ = 72 +

3B.

3 ————— 4 —————

Continue pattern

5 ————— 6 or V1 —————

7 or V<sup>b</sup>2 —————

Advanced Players: Continue pattern through all valve positions

♩ = 72

No Breath

4.

*f* *subito p* *f*

*p* *f* *p*

*f* *p*

Strive for **Maximum Resonance with Minimum Effort**

♩ = 80 ± Select a tempo at which you can comfortably make the phrases in one breath

5.

*f*

2

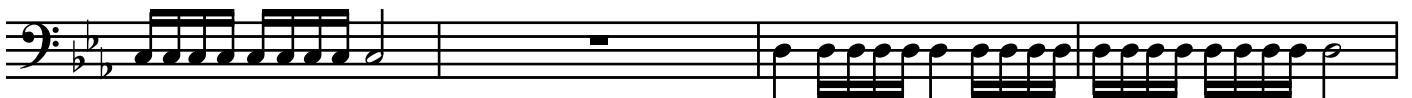
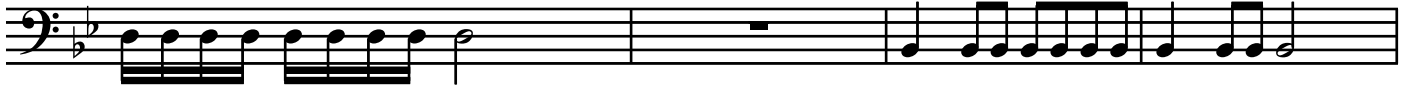
2

8<sup>vb</sup>

♩ = 80 +

6A.

Sempre Tenuto



♩ = 72 +

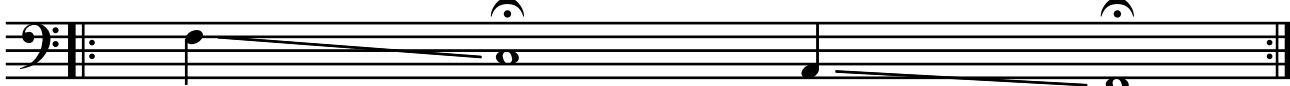
6B.

The musical score for 6B. is written in bass clef with a key signature of two flats (B-flat and E-flat) and a common time signature (C). The tempo is indicated as quarter note = 72 +. The score consists of ten staves of music. The first staff begins with a quarter rest, followed by a series of eighth notes. The second staff starts with a whole rest, then continues with eighth notes. The third staff begins with a quarter rest, followed by eighth notes. The fourth staff starts with a whole rest, then continues with eighth notes. The fifth staff begins with a quarter rest, followed by eighth notes. The sixth staff starts with a whole rest, then continues with eighth notes. The seventh staff begins with eighth notes, followed by a quarter rest, then eighth notes. The eighth staff starts with a whole rest, then continues with eighth notes. The ninth staff begins with eighth notes, followed by a quarter rest, then eighth notes. The tenth staff starts with eighth notes, followed by a quarter rest, then eighth notes.

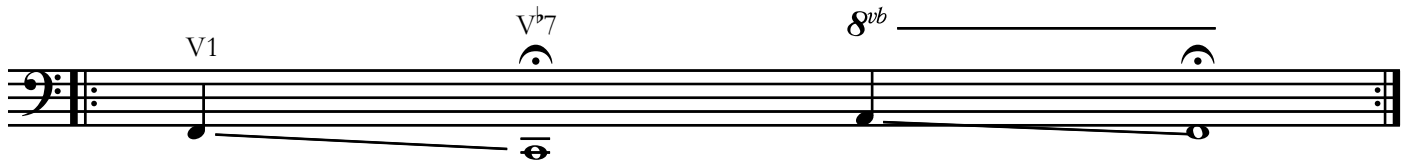


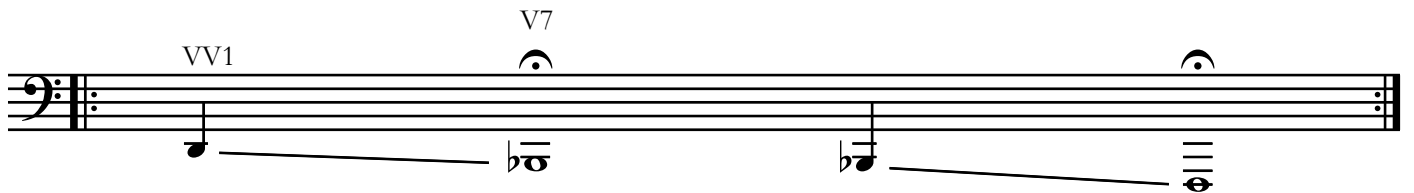
Play the lower smears faster in order to make the phrases comfortably in one breath

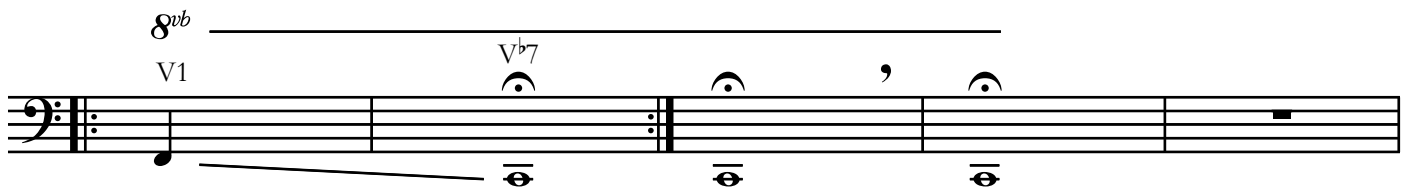
No Metronome

7B.  A single musical staff in bass clef. It contains a single note on the second line (G2) with a smear line extending to the right. Above the staff, there are two fermatas: one above the note and one above the end of the smear line.

 A musical staff in bass clef. It contains four notes with smears: G2 (labeled V1), B1 (labeled V<sup>b</sup>7), D2 (labeled V<sup>b</sup>2), and G2 (labeled V<sup>b</sup>7). Each note has a smear line extending to the right. Above the staff, there are four fermatas corresponding to each note.

 A musical staff in bass clef. It contains three notes with smears: G2 (labeled V1), B1 (labeled V<sup>b</sup>7), and D2 (labeled 8<sup>vb</sup>). Each note has a smear line extending to the right. Above the staff, there are three fermatas corresponding to each note.

 A musical staff in bass clef. It contains three notes with smears: G2 (labeled VV1), B1 (labeled V7), and D2 (labeled VV7). Each note has a smear line extending to the right. Above the staff, there are three fermatas corresponding to each note.

 A musical staff in bass clef. It contains four notes with smears: G2 (labeled 8<sup>vb</sup>), B1 (labeled V1), D2 (labeled V<sup>b</sup>7), and G2 (labeled with a comma). Each note has a smear line extending to the right. Above the staff, there are four fermatas corresponding to each note.

 A musical staff in bass clef. It contains two notes with smears: G2 (labeled 8<sup>vb</sup>) and B1 (labeled VV1). The smear line for the B1 note extends to the right and ends with a fermata. Above the staff, there are two fermatas corresponding to each note.